

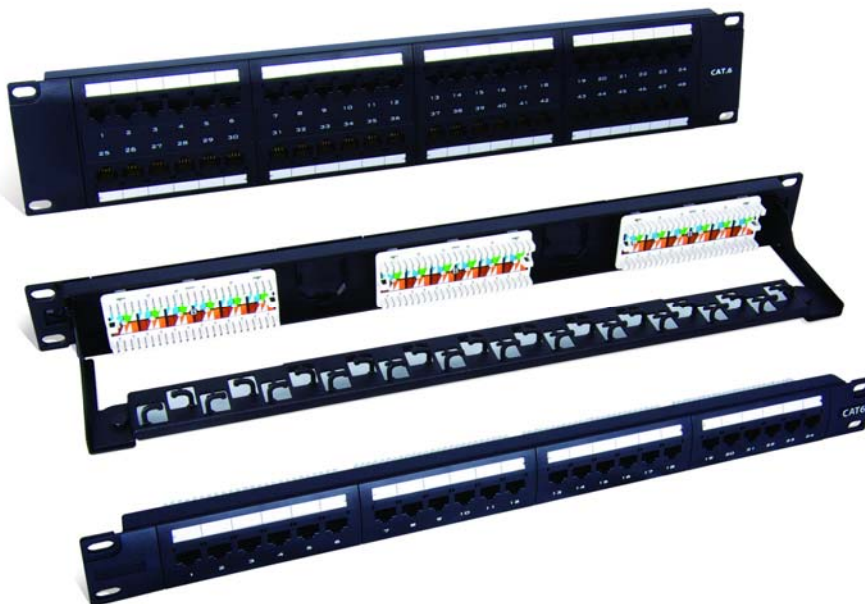
# SPECIFICATION

## For UTP CAT6 PATCH PANEL, MODULAR TYPE

### I. Part No.

Part #	Description
PD012R600	UTP 1U 12-port Krone/110 IDC
PD018R600	UTP 1U 18-port Krone/110 IDC
PD024R600	UTP 1U 24-port Krone/110 IDC
PD048R600	UTP 2U 48-port Krone/110 IDC
PD012R601	UTP 1U 12-port Krone/110 IDC, w/ plastic cable management
PD018R601	UTP 1U 18-port Krone/110 IDC, w/ plastic cable management
PD024R601	UTP 1U 24-port Krone/110 IDC, w/ plastic cable management
PD012R603	UTP 1U 12-port Krone/110 IDC, w/ metal cable management
PD018R603	UTP 1U 18-port Krone/110 IDC, w/ metal cable management
PD024R603	UTP 1U 24-port Krone/110 IDC, w/ metal cable management
PD048R603	UTP 2U 48-port Krone/110 IDC, w/ metal cable management

### II. Reference Photo:





### **III. Standards complied**

- ANSI/TIA/EIA-568-B.2-1
- ISO/IEC 11801 2<sup>nd</sup> edition: 2002
- EN50173-1: 2002

### **IV. Electrical Specification**

1. Insulation Resistance:  $\geq 500 \text{ M}\Omega$
2. Dielectric Withstand Voltage: 500VAC
3. Contact Resistance  $\leq 35 \text{ m}\Omega$
4. Current Rating: 1.5A at 68°F

### **V. Mechanical Specification**

1. Plug insertion Life:  $\geq 750$  times plug in
2. Contact Force 99.2g (3.5oz) FCC Plug
3. Plug Retention Force: 30lb (133n/13.3Kg)
4. 110/Krone IDC Insertion Force: 4.5Kg minimum
5. 110/Krone IDC Retention Force: 0.5Kg minimum
6. Temperature Test: -40 to 150°F (-40 to 66°C)
7. RJ45 Contact: Phosphor Bronze with 50u" Gold plating over contact area

### **VI. Packaging**

1. Each in brown card board box
2. Instruction sheet included