

16-Slot Web Smart Media Converter Chassis



For the smart powerful function and cost effective, PLANET releases the new 16-Slot Web Smart Media Converter Chassis MC-1600MR and MC-1600MR48.

The Web Smart Media Converter Chassis provides one management module and 16-Slots for optional FST-8 / GST-7 series Fast / Gigabit Ethernet Smart Media converter installation, with hot-swappable feature and the redundant link function to avoid entire network down time. Its management function allows network administrators to monitor the slide in connection status of converter module and configures the converter module via local console port and remote Web interface.

The MC-1600MR equip with one 100~240V AC power supply unit and MC-1600MR48 equip with one DC -48V power supply unit on its standard package, both MC-1600MR and MC-1600MR48 provide one spare power supply unit slot for option redundant power supply installation. A redundant power supply is also provided to enhance the reliability with options of either 100~240V AC power supply unit or DC -48V power supply unit.

KEY FEATURE

- High quality 19" Rack-Mountable Chassis installation
- Supports up to sixteen hot-swappable slide-in modular media converter
- One 10/100Mbps Fast Ethernet port and one RS-232 port for management
- Two power slots at rear panel for redundant power support with options of 100~240V AC or -48V DC supply
- Reduces the effort of converter's maintenance and management
- LED indicators for system and fan status, up to two fans installation of increased air-flow for system cooling
- Supports the PLANET smart Fast Ethernet and Gigabit Ethernet Media Converter FST-8 and GST-7 series
- Auto-MDI / MDI-X for 10/100Base-TX port
- Manageable through local console and remote Web interface
- EMI standards comply with FCC, CE class A

SPECIFICATION

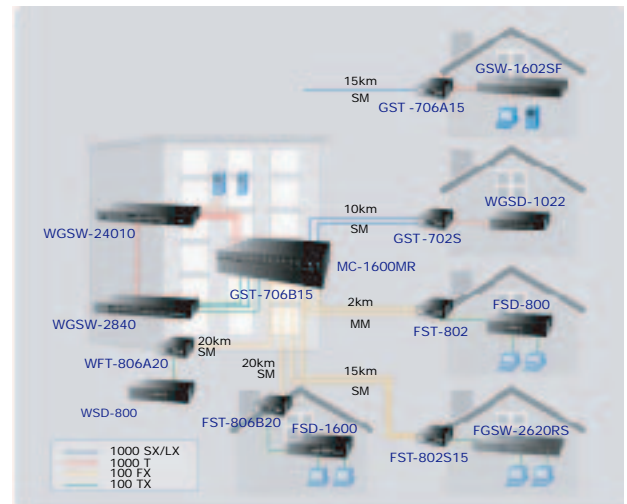
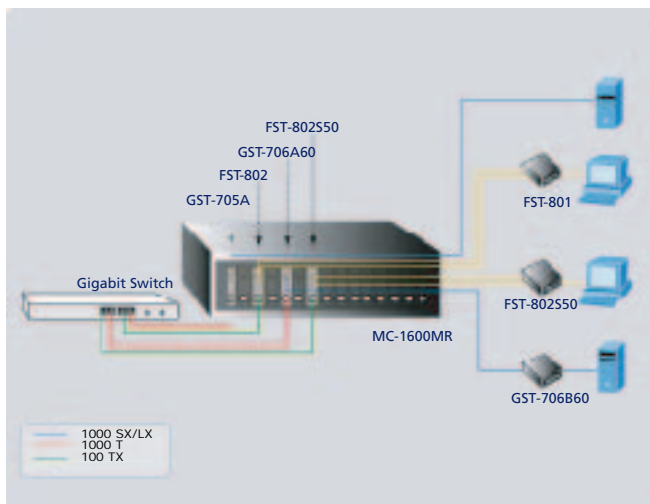
Product **16-Slot Web Smart Media Converter Chassis**

Model	MC-1600MR	MC-1600MR48
Hardware Specification		
Dimension (W x D x H)	440 x 88 x 350mm, 2U	
Slot	16 open Slot (115 x 80 x 26mm, W x D x H)	
Weight	7kg	
Power Requirement	100-240V AC, 1.5A, 50-60Hz	DC -48V, 2A
Power Output	5V DC per slot, 2A maximum	
Power Consumption	8.4 Watts / 28BTU (1 x power supply, not include converters) 120 Watts / 409BTU (Full loading)	5.3 Watts / 18BTU (1 x power supply, not include converters) 96 Watts / 327 BTU (Full loading)
Operate Environment	0~50 Degree C, 5%~90% RH	
Storage Environment	-20~70 Degree C, 5%~90% RH	
Emission	FCC Class A, CE mark	
Management Interface		
Standards	IEEE 802.3 10Base-T Ethernet, IEEE 802.3u 100Base-TX Fast Ethernet, IEEE 802.3x Flow control	
Fixed Interface	10/100Base-TX port x1, RS-232 console port x1, Reset button x1	
Speed	Ethernet: 10/20Mbps for half / Full-Duplex, Fast Ethernet: 100/200Mbps for half / Full-Duplex	
LED Indicator	System: MGM, Console: LNK/ACT, PWR ON x2, PWR FAIL x2, FAN FAIL x2	

APPLICATIONS

Centralize Management Media Converter Installation

Affording the current network grows and expanding, the PLANET MC-1600MR / MC-1600MR48 provide advanced Media conversion technology to fill this kind of demands. The Web Smart Media Converter chassis allows installing up to sixteen FST-8 / GST-7 series of Fast / Gigabit Ethernet Smart Media converter with diverse fiber connect types of options to meet different network applications. It is very flexible for FST-8 / GST-7 series to install into the central Web Smart Media converter chassis for centralized management.



Once, the FST-8 / GST-7 series of Fast / Gigabit Ethernet Smart Media converter install into Web Smart Media Converter chassis with hot swappable feature and redundant link function to avoid entire network downtime. The PLANET Web Smart Media Converter chassis with FST-8 / GST-7 series of Fast / Gigabit Ethernet Smart Media converter are the ideal solution for building a network solution of FTTC (Fiber to the Curb) and FTTB (Fiber to the Building) for ISPs, campuses and enterprises.

ORDERING INFORMATION

MC-1600MR	16-Slot Web Smart Media Converter Chassis (AC power)
MC-1600MR48	16-Slot Web Smart Media Converter Chassis (DC power)
MC-RPS130	130W Redundant Power Supply, 100-240V AC
MC-RPS48	Redundant Power Supply, DC -48V

RELATED PRODUCTS

Smart Fast Ethernet Media Converter

FST-801	10/100Base-TX to 100Base-FX (ST, MM) Smart Media Converter-2km
FST-802	10/100Base-TX to 100Base-FX (SC, MM) Smart Media Converter-2km
FST-802S15	10/100Base-TX to 100Base-FX (SC, SM) Smart Media Converter-15km
FST-802S35	10/100Base-TX to 100Base-FX (SC, SM) Smart Media Converter-35km
FST-802S50	10/100Base-TX to 100Base-FX (SC, SM) Smart Media Converter-50km
FST-806A20	10/100Base-TX to 100Base-FX (WDM, SM) Smart Media Converter- TX:1310nm-20km
FST-806B20	10/100Base-TX to 100Base-FX (WDM, SM) Smart Media Converter- TX:1550nm-20km

Smart Gigabit Ethernet Media Converter

GST-702	1000Base-T to 1000Base-SX (SC, MM) Smart Media Converter-220m/550m
GST-702S	1000Base-T to 1000Base-LX (SC, SM) Smart Media Converter-10km
GST-705	1000Base-T to 1000Base-LX (LC, MM) Smart Media Converter-220m/550m
GST-705A	1000Base-T to 1000Base-LX / SX (mini-GBIC, SFP) Smart Media Converter-distance depend on SFP module
GST-706A15	1000Base-T to 1000Base-LX (WDM) Smart Media Converter-TX:1310nm-15km
GST-706B15	1000Base-T to 1000Base-LX (WDM) Smart Media Converter-TX:1550nm-15km
GST-706A60	1000Base-T to 1000Base-LX (WDM) Smart Media Converter-TX:1310nm-60km
GST-706B60	1000Base-T to 1000Base-LX (WDM) Smart Media Converter-TX:1550nm-60km

Remark: Distance up to 100 km is available upon request